

SECTION 11  
TOWNSHIP 80 NORTH, RANGE 2 EAST,  
5<sup>TH</sup> PRINCIPAL MERIDIAN  
ALLENS GROVE TOWNSHIP  
SCOTT COUNTY, IOWA

TRANSFER PAGE 6

SCALE : 1 INCH = 330 FEET

SECTION PAGE

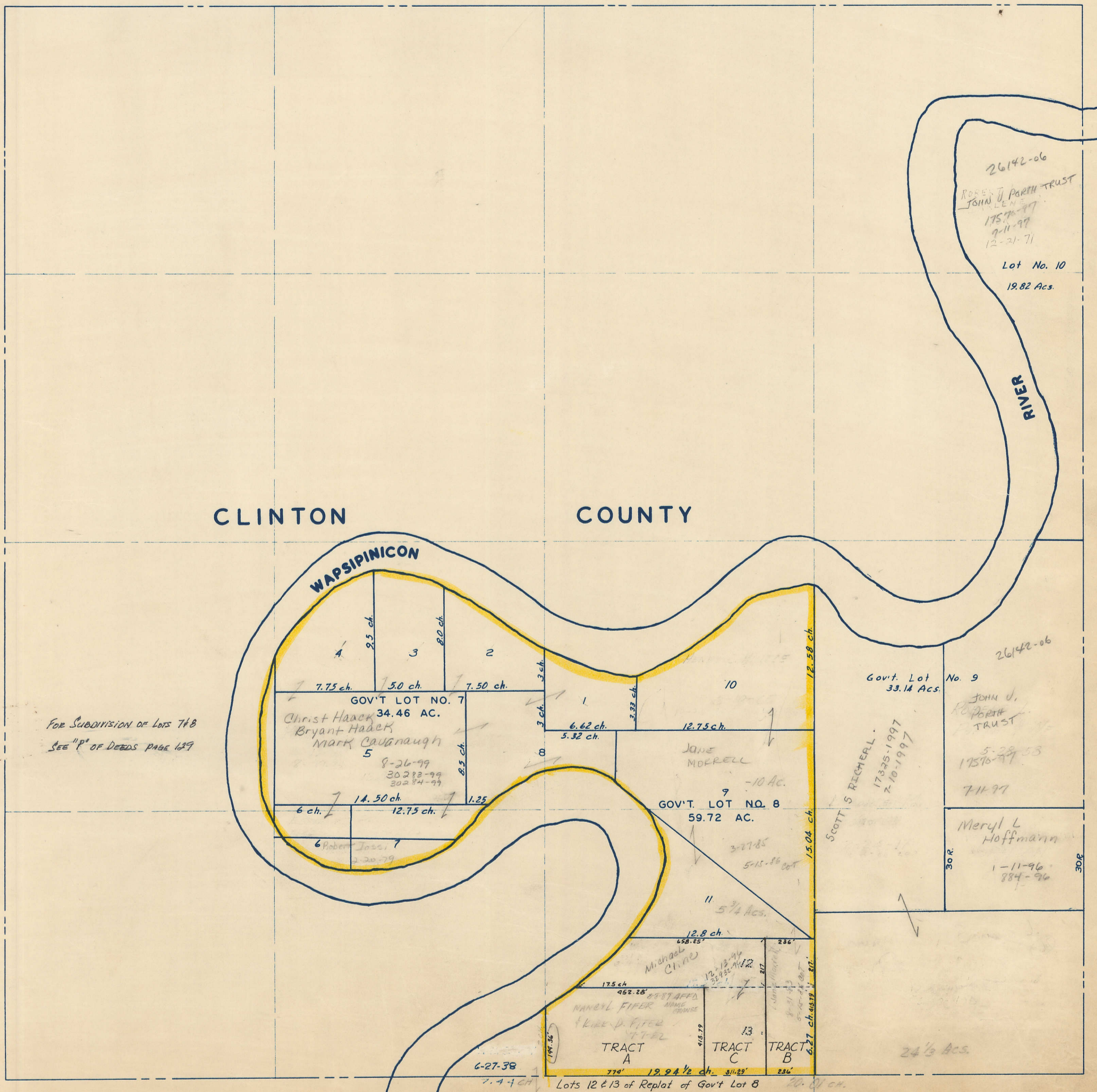
PAGE

SECTION

CLINTON COUNTY

PAGE 12

SECTION 12



FOR SUBDIVISION OF LOTS 7 & 8  
SEE "P" OF DEEDS PAGE 127

Lots 12 & 13 of Replat of Gov't Lot 8